

SCUTTLEBUTT

SUSSEX POLICE OFFSHORE SAILING CLUB
& DINGHY SAILING CLUB



NEWSLETTER

**PSUK Dinghy
Nationals 2022**
*Information from your
Commodore*
Page 2

End of an Era
*Royal Sovereign Lighthouse
decommissioned,
by Dusty Miller*
Page 2

Flotilla for 19th March
*Briefing for flotilla marking the
demise of the Royal Sovereign
Lighthouse*
Page 2 - 3

**PSUK Dinghy
Nationals 2022**
*Advert by the Avon & Somerset
Constabulary*
Page 3

2022 PSUK DINGHY NATIONALS

Back on the water at the Chew Valley Lake Sailing Club,
Somerset on the 15th & 16th June.

Dear Sailors,

The attached email and Advanced Race Information are for the 2022 PSUK Dinghy Nationals to be held at Chew Valley Lake Sailing Club on 15th and 16th June 2022.

In his email Kim HUXTABLE refers to it going ahead providing the PSUK give them funding, at the PSUK AGM this week the funding was agreed.

This is a great event with a very wide range of sailing skills taking part.

The winner gets the opportunity to represent the UK Police at international events and can claim £500 expenses if they do so. There are also various trophies to be won and normally some very good sailing raffle prizes.

If you know sailors who are not part of SPDSC but are retired or currently working for Sussex Police they are entitled to enter. Please inform them too.



It would be great if Sussex could be represented at this event. If you are interested in attending please reply to the email on the poster and cc me please.

Looking forward to a good season.
Owen Poplett
Surrey & Sussex Crime Review Team
Specialist Crime Operations
Mobile: 07901670721.



Editorial Note

Please remember that this is your magazine and should reflect your views and experiences for the benefit of other members. If you have any comment, articles or photographs you feel are appropriate for inclusion then please forward them to me, terryclothier@hotmail.com for publication.

The opinions expressed in articles within Scuttlebutt are those of the individual only and not necessarily those of the Sussex Police Offshore or Dinghy Sailing Clubs. No responsibility can be accepted for any inaccuracies or omissions.



SCUTTLEBUTT

Royal Sovereign Lighthouse by Dusty Miller



Royal Sovereign lighthouse, located 11 km (6.8 mi) offshore from Eastbourne, is a lighthouse marking the Royal Sovereign shoal, a sandbank named after HMS Royal Sovereign. Its distinctive shape is easily recognised as it comprises a large platform (which functions as a helicopter deck) supported by a single pillar rising out of the water.[3] Originally, the platform was manned by three full-time keepers, accommodation being contained in the 'cabin section' immediately below the platform. Additional accommodation was provided for up to four visiting maintenance workers.

The lighthouse replaced a lightship that had marked the Royal Sovereign Shoal since 1875.

The structure was built, in two parts, on Newhaven beach, and put into position in 1970. First, the base and attached column were floated out to the shoal, where the hollow base was flooded and allowed to sink into position. Then the cabin section and superstructure were floated out, positioned over the base and allowed to settle on to the column as the tide fell. [4] Afterwards the telescopic inner section

of the column was jacked up, increasing its height by 13 metres (43 ft).

Royal Sovereign Lighthouse was built in 1971 with a design life of 50 years. Having monitored the fabric of the lighthouse over the last decade and observing the expected signs of deterioration, Trinity House has concluded that the ongoing safety of the mariner requires that the structure be fully decommissioned.

This is due to be decommissioned in 2022. ***This is being marked by a Flotilla event on Saturday 19th March*** – having been postponed from the 5th March due to one of the Harbour Lock's being serviced - out of Eastbourne Marina organised by Sovereign Harbour Yacht Club. There are some sixty plus vessels registered to take part, including rowing boats from Bexhill Rowing Club.

In the days before Health and Safety there were dinghy races around the Sovereign Light Vessel in the 1960s and continued to do so in the 1970s when the tower was built. These photographs show racing dinghy 505's from Bexhill Sailing Club. This was a race over at least 14 miles from Bexhill

This Light Tower is an iconic mark, easily able to be seen from the South Downs above Eastbourne and from along the coastline from Eastbourne to Hastings.



This photograph was taken by Dusty Miller from the yacht Kratos when sailing out of Eastbourne on route to France in June 2019 to visit the D-Day remembrance event.

With Roy Martin, Peter Goodman and Andy Bullen we visited a number of French Harbours including Honfleur. We met up with numerous Canadian and American Veterans.



Kratos rafted up outside Honfleur.

The Light Tower is a navigational aide and a welcome sight to those returning from France knowing we are nearly home.

Take part or just watch the spectacle!

Briefing update for flotilla 5th March

(N.B. Now Saturday the 19th March)

The weather is looking favourable for the 5th March. However Dan, the harbour manager has told me the lock maintenance is 3 days behind due to last week's strong winds. They are working hard to get it ready before next weekend. Dan has told me he will update us on Monday, so we will update you all as soon as we have more information. If the locks are ready it looks like we will be going.

The public viewing area is shown in red on the chart below.



SCUTTLEBUTT

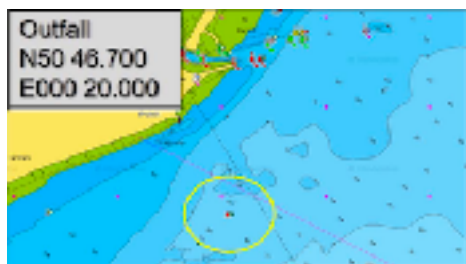
Briefing update continued;

The Flotilla is to use vhf channel 72
Sovereign Harbour is on vhf channel 17
Solent Coastguard is on vhf Channel 16

Please call Sovereign Harbour on vhf ch17
before slipping your mooring,
Please lock out throughout the morning in
order to avoid congestion at locks,
There will be 3 safety boats - Well Plumbed and
2 x black ribs which will all be flying blue flags.
Well Plumbed will be giving a briefing over the
vhf channel 72 at 10am, then at 11am and then
just before we start at 12noon.

The Flotilla will start at 12 noon.

The muster location is shown on the chart
below - Langney Point outfall buoy.



The lead boat will be Well Plumbed, followed
by Bates Wharf's Azimut. Then all fall in
behind in a line.
100m spacing between boats please.
We will all be heading along to the Monarch
buoy, (yellow race mark) rounding the mark and
then heading to the tower.
If you have any problems on the way up to the
Monarch buoy, please turn to port to clear the
flotilla safely.
If you have a problem after rounding the
Monarch buoy, please turn to starboard to clear
the flotilla safely.
Please observe 6 Knots max.
High tide will be at 13.03 at a height of 7.4m.
Collision regulations apply to all vessels.
All vessels to be under power at all times.
Once at the tower there is a 200m exclusion
zone,
Trinity House rules say do not touch the tower,
do not sail under the tower and keep a safe
distance at all times.



PSUK Dinghy Championships

15th and 16th June 2022

Chew Valley Lake Sailing Club, Somerset



**Advance notice of the above event that is
provisionally scheduled to occur this summer.**

**Please send expressions of interest in taking part in
this event to Sailing Secretary Kim Huxtable**

asfcsailingsecretary@gmail.com

Any drones flying please adhere to the CAA drone flying regulations. Also please be
aware that there will be aircraft flying over us.
All are welcome at SHYC after you are all safely back in the harbour to exchange
stories and memories of the Royal Sovereign Lighthouse.
Our chosen charity this weekend is Wet
Wheels and there will be donation buckets on
the bar.
Let's keep our fingers crossed for a great day
on 5th March. We will notify everyone next
week of any changes by email, our SHYC
Facebook page and our SHYC events page.
Regards,

Gary Mead

